

Independent Practice

p.77-78

1. If $a - b = 12$ and $a/3 = 10$, then what is the value of b ?

- (A) -8.67
- (B) -2
- (C) 2
- (D) 18
- (E) 30

$$a = 30$$

$$\begin{array}{r} 30 - b = 12 \\ -30 \quad -30 \\ \hline + b = +18 \end{array}$$

2. For which of the following values is $\frac{y^2 - 7y + 6}{7 - y}$ undefined?

- (A) -7
- (B) 1
- (C) 6
- (D) 7
- (E) 16

undefined when
denom is zero

$$\begin{array}{l} 7 - 6 = 1 \quad 7 - 7 = 0 \\ 7 + 7 = 14 \end{array}$$

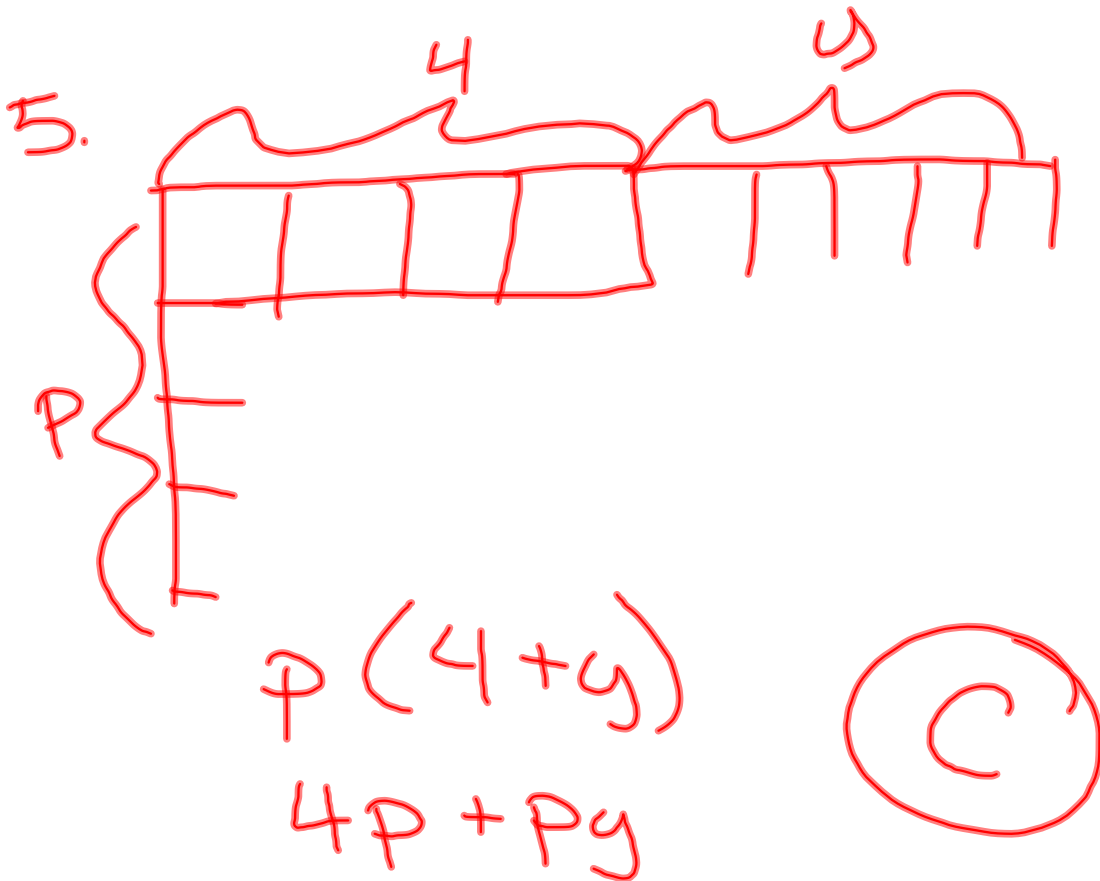
3. $y = -\frac{2}{3} \quad \frac{2}{y} + \frac{5}{y+1}$

$$2 / (-2/3) + 5 / (-2/3 + 1) = 12$$

4. initial: w
gained x lbs
lost y lbs
now: weight 150 lbs

$$\begin{array}{l} 150 + y - x \\ w + x - y = 150 \\ w + x = 150 + y \\ w = 150 + y - x \end{array}$$

(A)



6. 10% paste

S soup
 W water

$$\text{percent} = \frac{\text{part}}{\text{whole}} = \frac{10s}{s+w} \%$$

$$m = 3b = 3 \cdot 8 = 24$$

$$j = \cancel{m} \div 2 - 2$$

$$12 - 2 = 10$$

$$n = \cancel{m} - j = 24 - 10 = 14$$